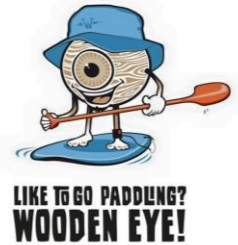


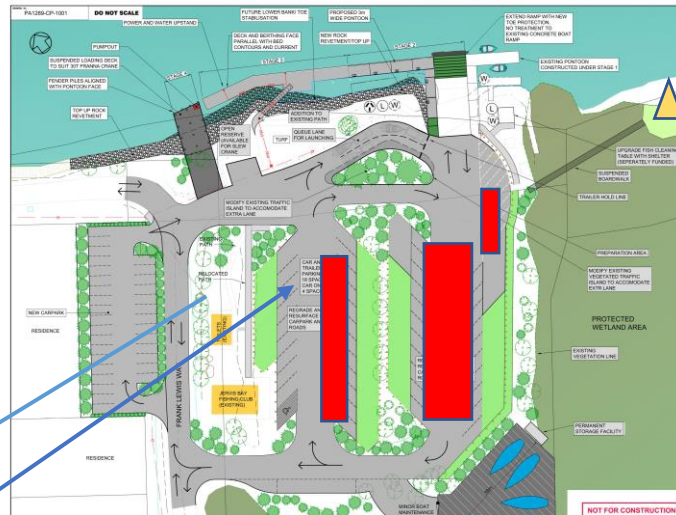
# Wooden Eye Paddling

## Site Map and Pre- Paddling Brief



### Site 1: Woolmia Boat Ramp

Please check in before you enter the water using the Wooden Eye Woolamia Boat Ramp Bar Code Below. Your instructor will complete the check out form when you have finished your on the water lesson.



Launching beach

Parking areas

Do not park in the RED rectangle areas

**Before any paddling group enters the water it is important that your instructor explain the following important safety points with you.**

### Before you enter the water:

1. Have you removed all expensive sun glasses, hats, car keys, watches, phones etc that may fall off during your paddle?
2. Have you signed your Participant Waiver Form?
3. Have you disclosed any injuries, illnesses or conditions that may affect your ability to participate in a water based activities?
4. Has your instructor outlined the shore hazards, water hazards, wind hazards, other craft hazards with you before entering the water?
5. Do you know the Wooden Eye Wave or Emergency Signal Wave to help attract attention?
6. Did you bring water, sunscreen and a hat with you?

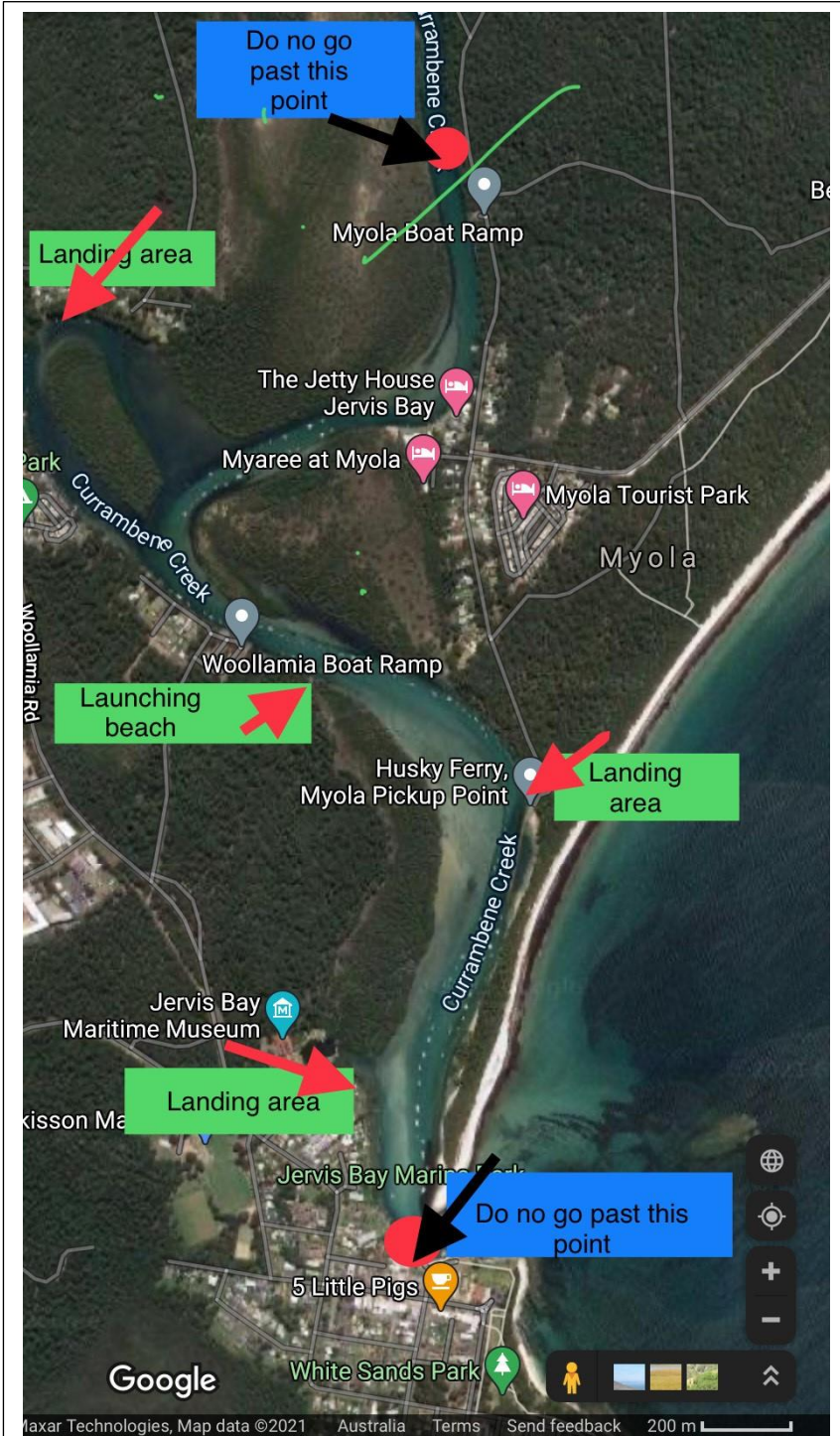
Please observe the map over page and listen to your instructor's guidelines regarding paddling safety at the this site

# Wooden Eye Paddling

## Site Map and Pre- Paddling Brief



### Site 1: Woolmia Boat Ramp



### Safety Guidelines

**Listen to your instructor regarding wind directions and tidal flow.**

**Your instructor will inform you of the direction you will be heading**

**Listen for your instructor's whistle as you will be instructed when to head back to your launching area of nearest landing area**

**If you need assistance, please place 1 hand on your head like the picture below shows:**

